



pack'solutions
customized



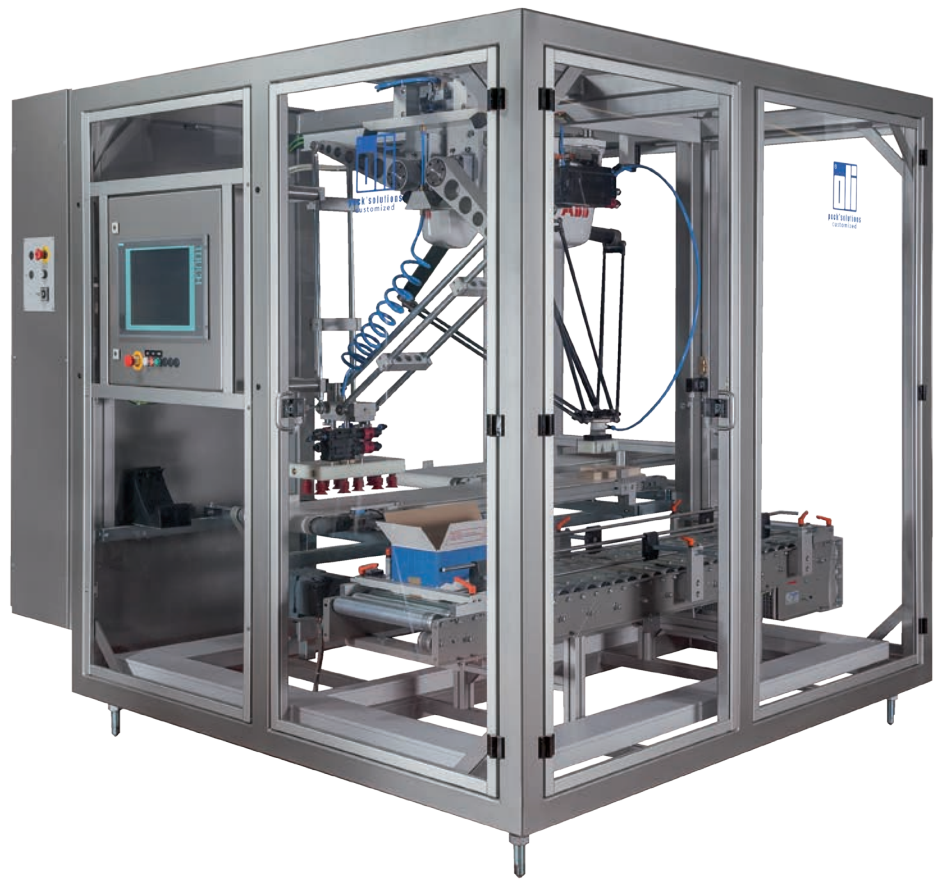
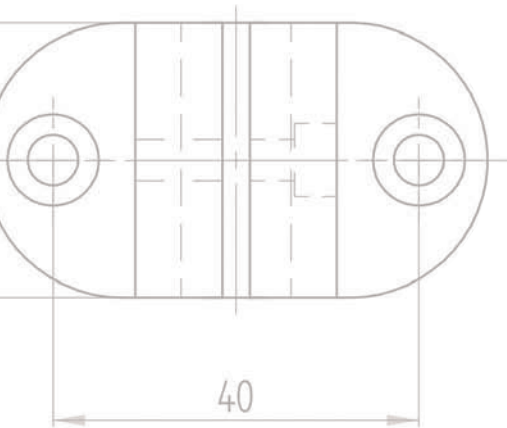
Pharma | Cosmetics



Food



Non-Food

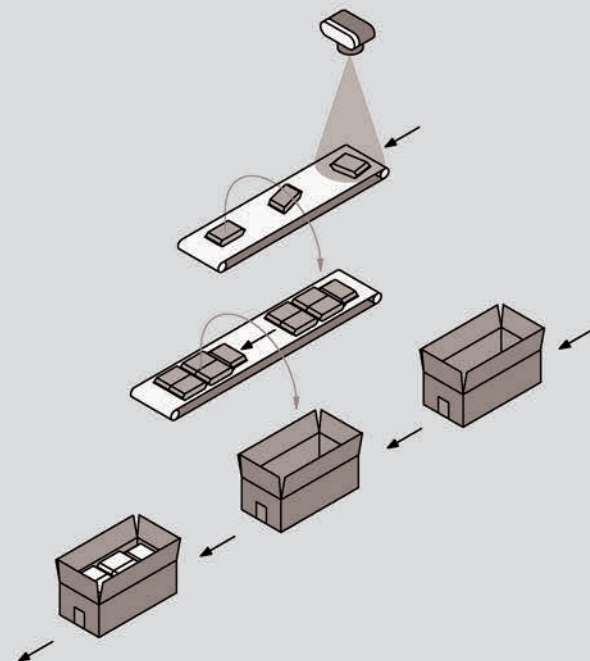


Packaging Robot

oli 210 V/R operating principle

oli 210 V/R - Pick & Place

- » Suitable for all conventional types of cases or products, especially for suckable products like bags, tubes, blisters, folding boxes etc.
- » Fully automatic product infeed, detection, orientation and collation
- » Can be perfectly combined with oli case erector and sealer
- » Maximal flexibility due to double robot technology (2 axis and 4 axis technology)
- » Processing is gentle on products offering highest process safety





» Infeed - product vision control

» Flex Picker for pregrouping

» oli robot - insert in case

» Insert in case

Packaging Robot oli 210 V/R - Pick & Place

Standard features of this installation include the following components:

- » **Product infeed**
- » **Camera system for product detection**
- » **Robot for pre-grouping of product layer**
- » **Pick-and-place robot for inserting the pre-grouped product layers**
- » **Transport conveyors for trays/cases**

Can be easily extended with case/tray erector **olimat 1A**, case sealer **olimat V** and palletising robot **oli-pal** to operate as a fully automatic final packaging line.

General Information:

Can be applied in all industries. Pharmaceutical compliant GMP, compact and space saving design. Superior workmanship / material quality and refined operationability in all details:

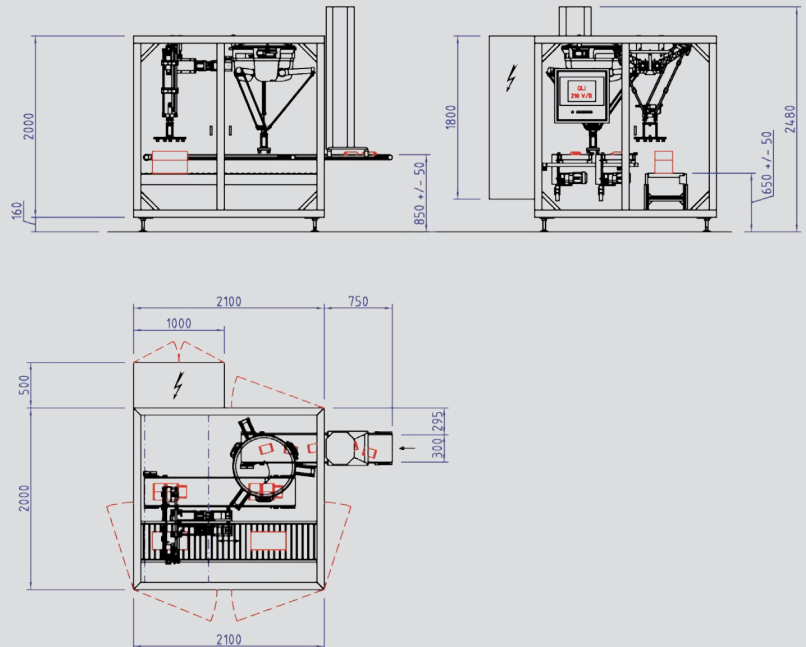
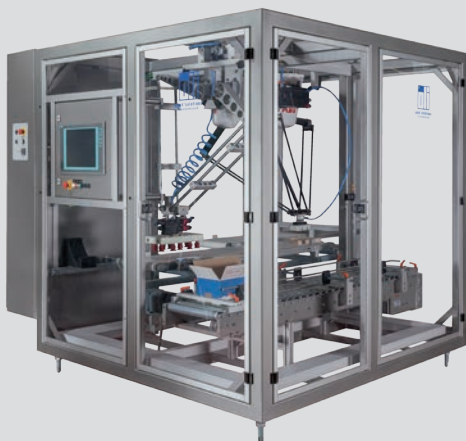
- » All components are readily accessible
- » Easy to clean
- » Especially compact design
- » Operator panel with multi lingual touch screen panel
- » Highest flexibility due to double robot technology
- » Quick format change (fully automatic on demand)
- » State of the art robot technology
- » Practically maintenance free

Technical Information:

Output: max. 100 single products/min or 20 insert movements/min
 Multiple loading capability feasible to increase output
 Format range: to customer preference
 Operating voltage/required power: 3 x 230/400 V/N/PE, 50/60 Hz, 3,5 kVA
 Air pressure: 3-6 bar
 Floor layouts: Left or right-hand variants to customer preference
 Change over time: approx. 5-15 min

Note:
 oli packaging machinery is customized in terms of output, colour, installed load, etc., to suit the specific customer application. All machinery can be designed inversely for every format.

Layout oli 210 V/R



O. Lingenfelder
oli-Spezialanlagen GmbH

Blumenstraße 17-21
 82538 Geretsried
 GERMANY
 Phone +49 8171 9673 0
 Fax +49 8171 9673 10
 E-Mail buero@oli-gmbh.de
www.oli-gmbh.eu

